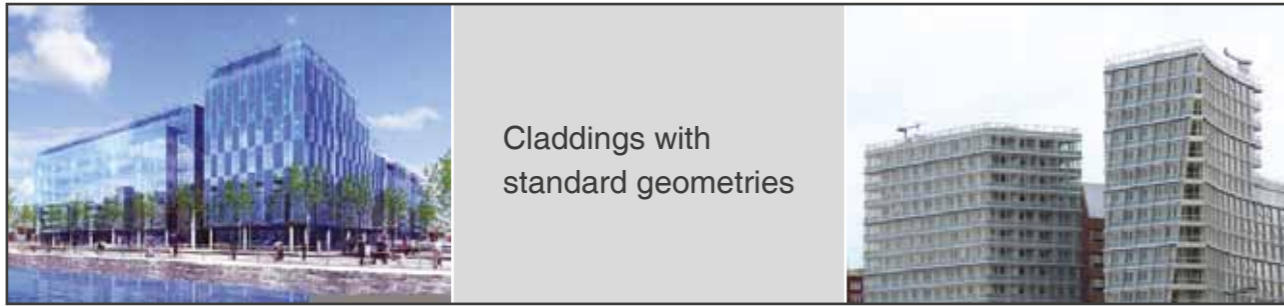


**prototyp** FACADE ENGINEERING



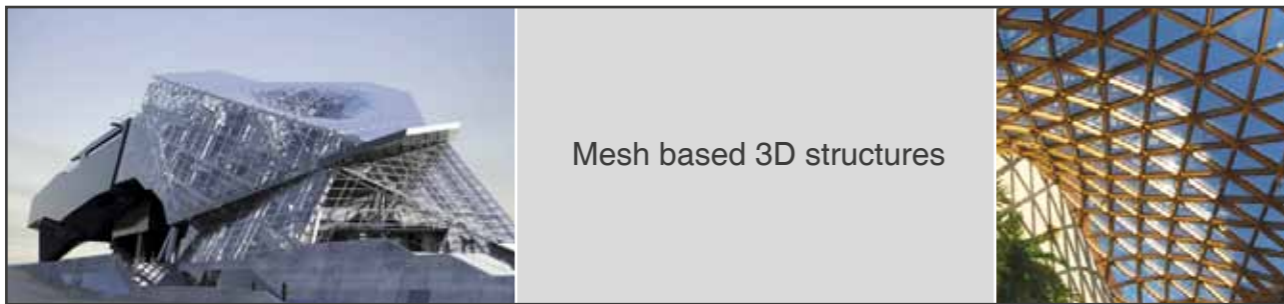
# OUR SERVICES



Claddings with standard geometries



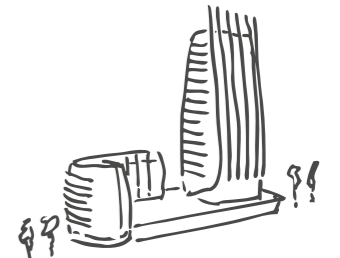
Structures with 3D elements



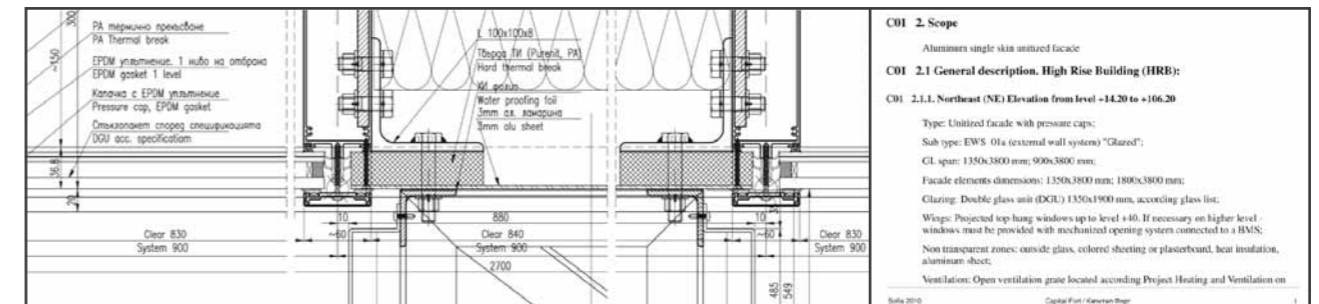
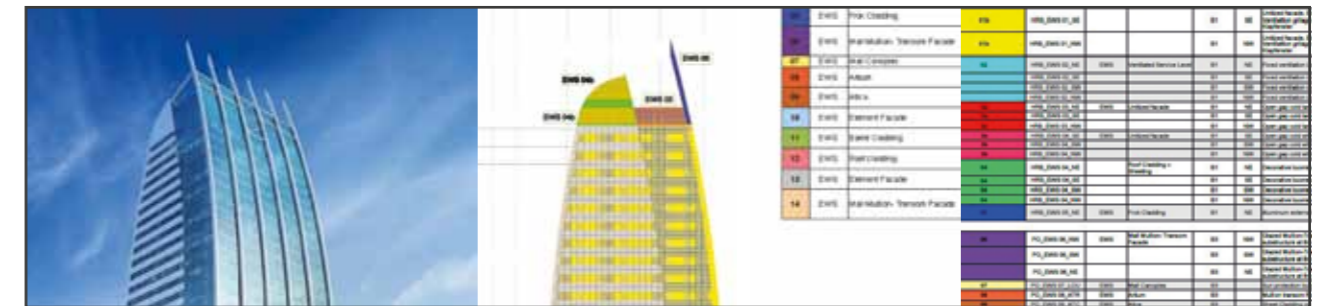
Mesh based 3D structures

# CONSULTING

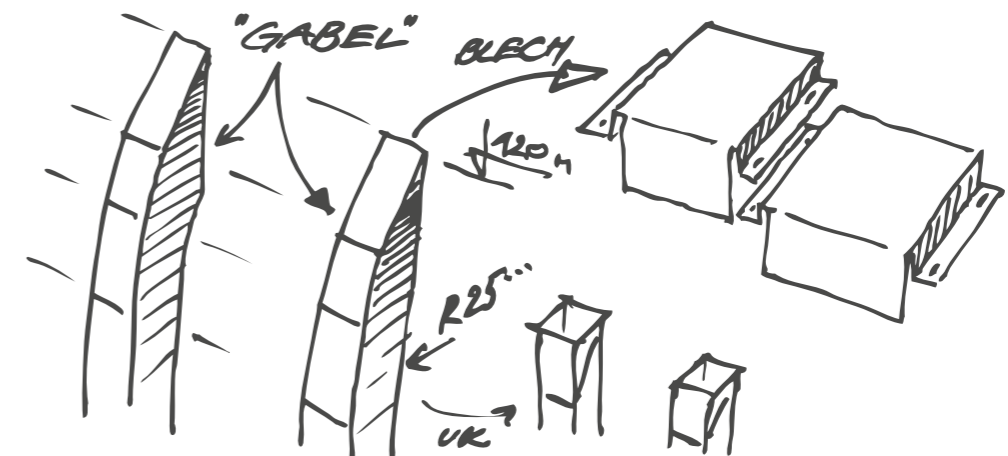
**Consulting** of architects and designers makes decisions easier and expedites the choice of facade types, materials, coatings, etc. No aspect of such complex structures has to be ignored. Aesthetics, statics, safety, physics and economic aspects have to be coordinated in the early stages of the design process. A professional lead design, a BOQ and a performance specification are the basis for a successful construction management process.



Capital Fort Building, Sofia, Atkins Architects



- CONSULTING** ○ Consulting, lead design and performance specification
- TENDER** ○ Tender drawings, preliminary structural calculations
- APPROVAL** ○ Approval drawings, structural calculations
- EXECUTION** ○ Manufacturing and assembly drawings, detailed statics



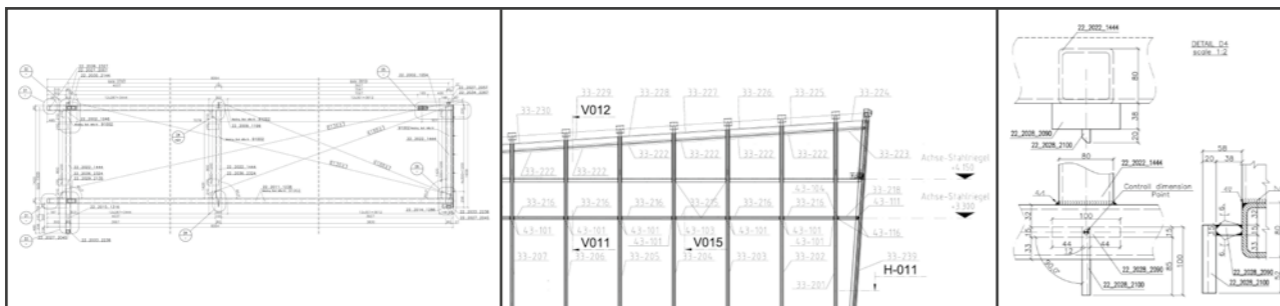
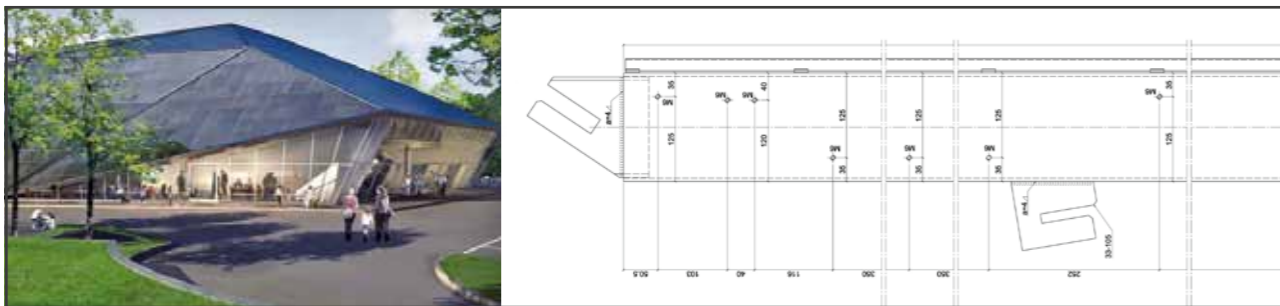


# EXECUTION

**Workshop drawings** are based on approved design drawings and enable manufacturing, assembly and installation of a cladding. Every building envelope project is subdivided in separate workshop packages. A workshop package is a part of the structure that is designed, manufactured, assembled and installed in one piece. Part-, assembly- and installation drawings as well as BOQ's, are part of our standard scope of work.



Umwelt Arena, Switzerland,  
Rene Schmid Architekten



	Standard scope	Optional scope
<b>Manufacturing</b>	<ul style="list-style-type: none"> <li>SINGLE-PART DRAWINGS with BOQ</li> <li>DOOR AND WINDOW DRAWINGS</li> <li>SHEET METAL DRAWING with BOQ</li> <li>GLASS DRAWING</li> </ul>	<ul style="list-style-type: none"> <li>CNC programming</li> <li>3D data for complex parts</li> <li>ORGADATA, SCHUCAL, MAP etc. data</li> <li>Unfolded sheet metal parts, DXF</li> </ul>
<b>Assembly</b>	<ul style="list-style-type: none"> <li>ASSEMBLY DRAWINGS (optional) with BOQ, for example:                             <ul style="list-style-type: none"> <li>- an element</li> <li>- a panel</li> <li>- an assembled bracket</li> </ul> </li> </ul>	<ul style="list-style-type: none"> <li>Drawings of devices, transport racks, etc.</li> </ul>
<b>Installation</b>	<ul style="list-style-type: none"> <li>INSTALLATION DRAWINGS with BOQ for each work packet, for example:                             <ul style="list-style-type: none"> <li>01.01 - facade Lv01, brackets</li> <li>01.xx designates the area &gt; facade</li> <li>xx.01 designates the part packet &gt; brackets</li> </ul> </li> </ul>	<ul style="list-style-type: none"> <li>Points lists for surveyors</li> </ul>

# STRUCTURAL CALCULATIONS

**Preliminary structural calculations** are used to determine the approximate sizes of structural profiles, glasses, brackets, etc. in the early stages of the project.

**Structural calculations** are the basis for the approval design. They include all information about the loads, load cases and the statics of the supporting structure. Additional components as glasses and sheet panels are included as well. Reaction forces and beam sections are the main result of the structural calculation.

**Detailed statics** are the continuation of the structural calculation. All components, that require static dimensioning and are not included in the structural calculation, are calculated. Such components are brackets, bolts, rivets etc.

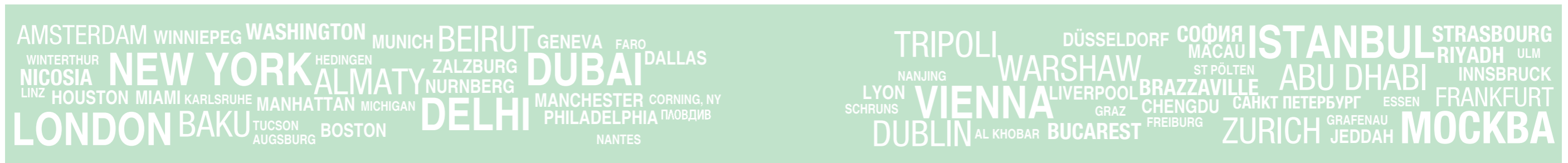
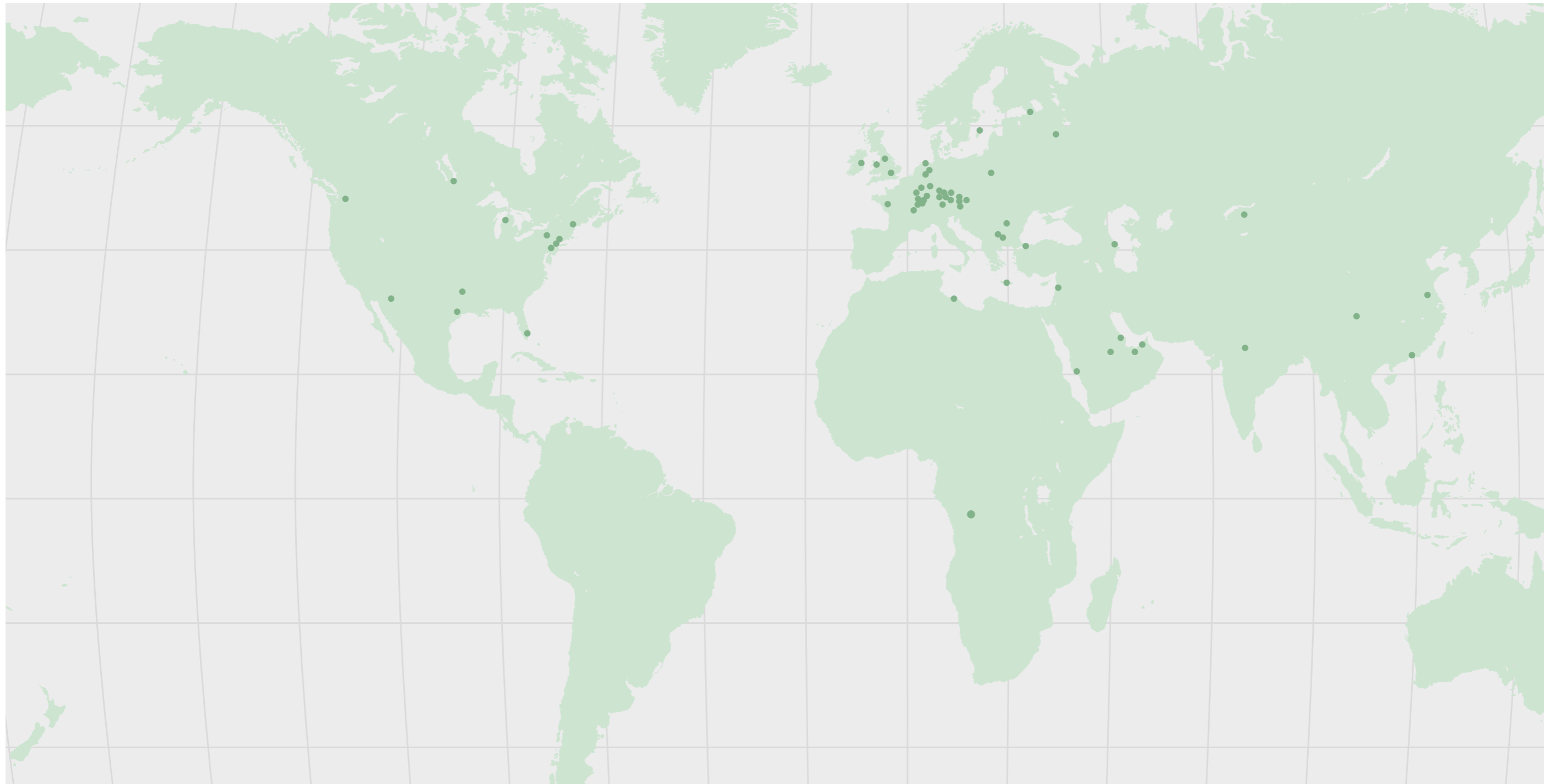


ΠΡΟΕΚΤΙ  
PROJETS

PROJEKTE  
PROGETTI

PROJECTS  
PROJETOS

PROYECTOS  
ΠΡΟΕΚΤΥ



РЕФЕРЕНЦИИ  
RÉFÉRENCES

REFERENZEN  
REFERÊNCIAS

REFERENCES  
REFERENZE

REFERENCIAS  
РЕФЕРЕНЦИИ



2012, MANCHESTER / МАНЧЕСТЪР



2006, SOFIA / СОФИЯ



2007, MUNICH / МЮНХЕН



2013, LYON / ЛИОН



2012, LONDON / ЛОНДОН



2013, SOFIA / СОФИЯ



РЕФЕРЕНЦИИ  
RÉFÉRENCES

REFERENZEN  
REFERÊNCIAS

REFERENCES  
REFERENZE

REFERENCIAS  
РЕФЕРЕНЦИИ



2008, JEDDAH / ДЖЕДА



2011, MANCHESTER / МАНЧЕСТЪР



2013, VIENNA / ВИЕНА



2007, LIVERPOOL / ЛИВЪРПУЛ



2008, ALMATY / АЛМАТИ



2007, AMSTERDAM / АМСТЕРДАМ

РЕФЕРЕНЦИИ  
RÉFÉRENCES

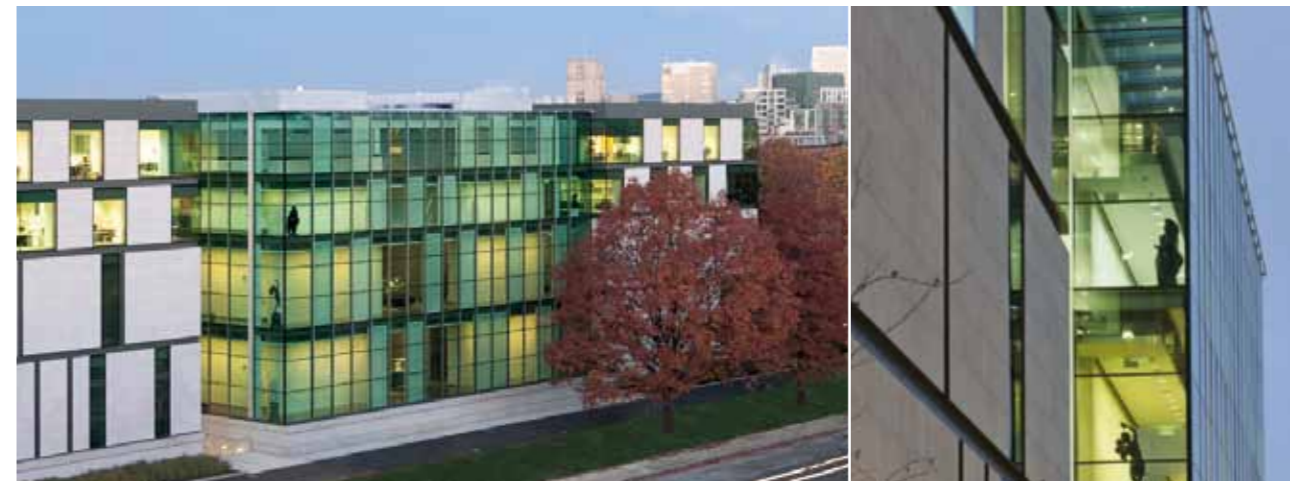
REFERENZEN  
REFERÊNCIAS

REFERENCES  
REFERENZE

REFERENCIAS  
РЕФЕРЕНЦИИ



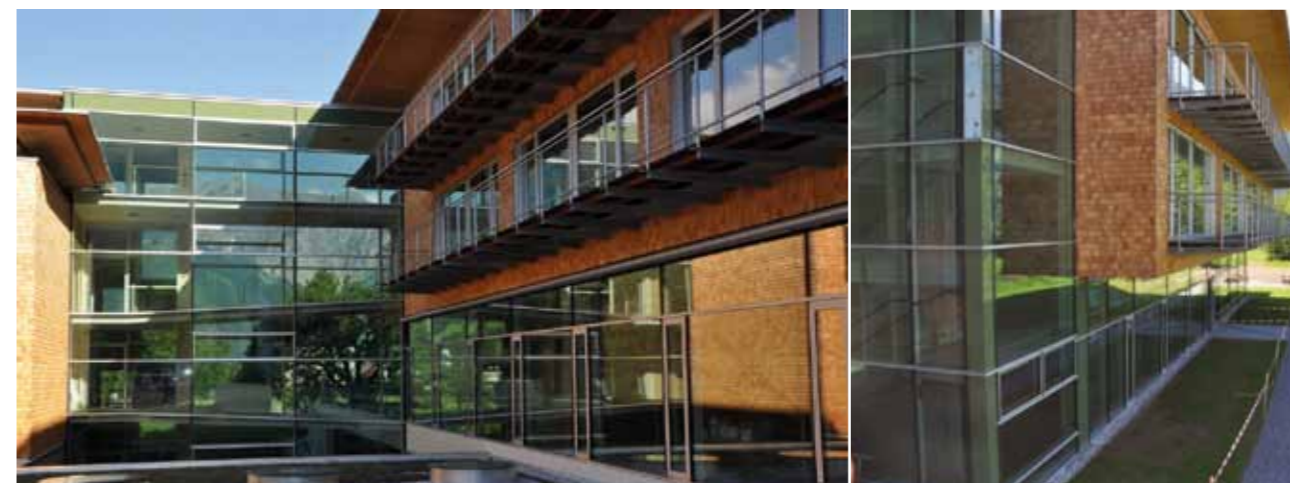
2009, SOFIA / СОФИЯ



2012, BOSTON / БОСТЪН



2008, ULM / УЛМ



2009, SCHRUNS / ШРУНС



2012, ABU DHABI / АБУ ДАБИ



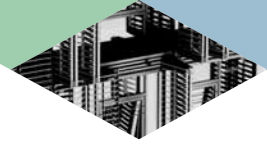
2009, LONDON / ЛОНДОН

КЛИЕНТИ  
CLIENTS

KUNDEN  
CLIENTI

CLIENTS  
CLIENTES

CLIENTES  
КЛИЕНТЫ






**prototyp** **FACADE ENGINEERING**

117 Zaichar St.  
1309 Sofia, Bulgaria  
office@prototyp.bg  
www.prototyp.bg

